

# Report

## NDP Leader and B.C. Premier Succession



DATE July 2022

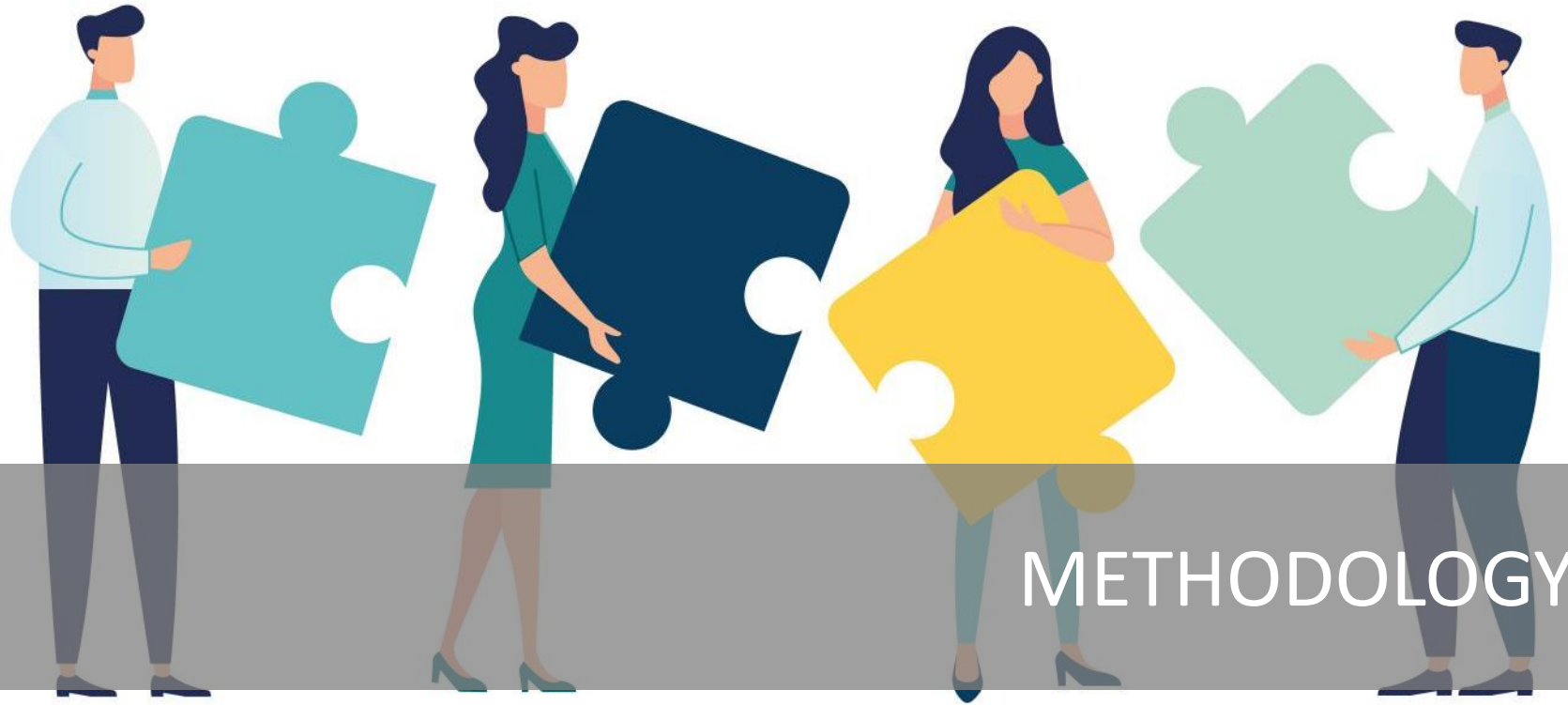
# Leger

---

*We know Canadians*

# Table of Contents

<b>— METHODOLOGY</b>	Page 03
<b>— KEY FINDINGS</b>	Page 05
<b>— DETAILED RESULTS</b>	Page 07
<b>— RESPONDENT PROFILE</b>	Page 16
<b>— APPENDIX</b>	Page 20



METHODOLOGY

# METHODOLOGY



Online surveys with British Columbia residents conducted via Leger's online panel, LEO.



Results taken from two waves of OMNI: from July 8<sup>th</sup> to 10<sup>th</sup> 2022 and from July 22<sup>th</sup> to 24<sup>th</sup> 2022. See each slide for time stamp.



1,000 residents of BC that are 18 years of age or older.



Using data from the 2021 Census, results were weighted according to, age, gender, and region in order to ensure a representative sample of the population in British Columbia.



No margin of error can be associated with a non-probability sample. However, for comparative purposes, a probability sample of 1,000 respondents would have a margin of error of  $\pm 3.1\%$ , 19 times out of 20.



Key Findings

## KEY FINDINGS



### The BC NDP still maintains a significant lead over the BC Liberals in BC, and parties seem to be retaining their voters

- While slightly declining since the last election, NDP still holds the greatest degree of support (44%)
- All parties have high retention of voters, with the NDP at 86%, Conservative at 83%, Liberals at 81%, and Green at 74%



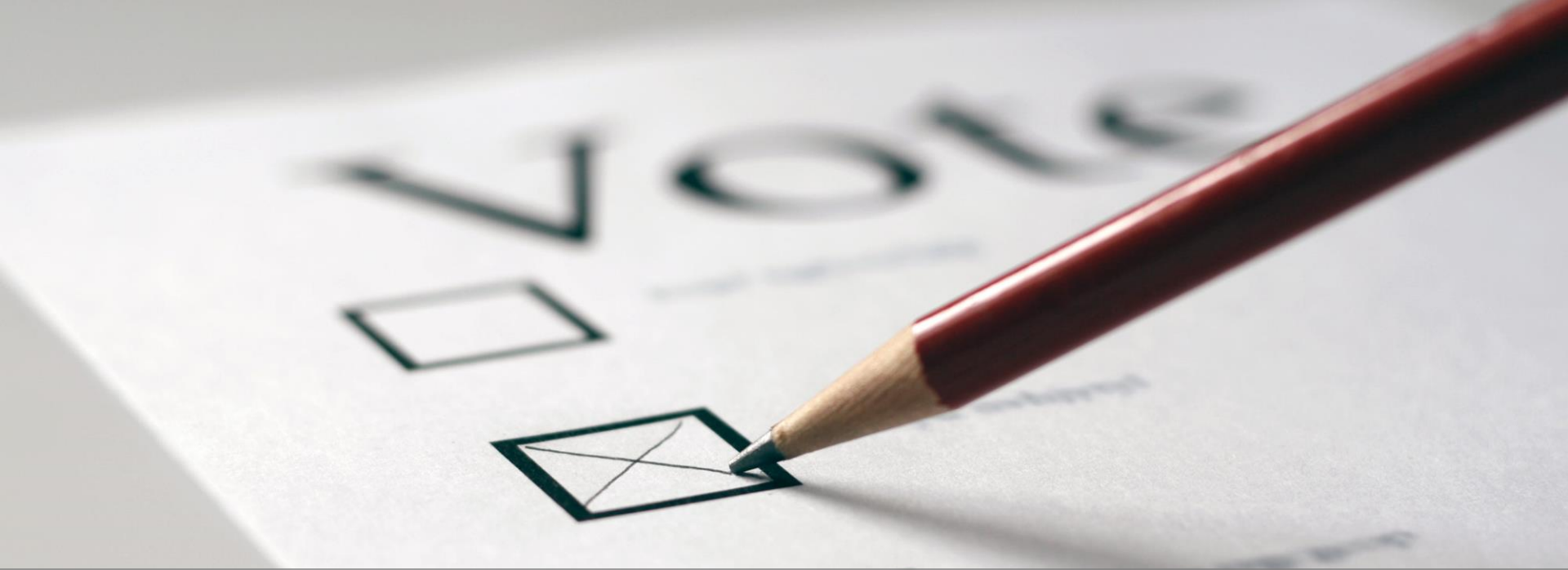
### Most British Columbians don't know who they would like to replace Horgan, but among those who do, the preference is David Eby

- Almost two thirds of British Columbians don't know which candidate they would support as successor.
- Among those who are decided or leaning towards voting for the NDP, support for David Eby is strong (44%).



### Since 2020, British Columbians' priorities have shifted away from pandemic-related issues

- In 2020 BC residents focused on managing pandemic-related issues, while now more than half seem to want the future Premier to prioritize general healthcare issues, as well as high cost of living and housing



Detailed Results



## PARTY WOULD VOTE FOR IN NEXT PROVINCIAL ELECTION

The BC NDP retains support from the vast majority of past voters and is the highest relative to all voters of other political parties

PARTY WOULD VOTE FOR IN NEXT PROVINCIAL ELECTION		PARTY VOTED FOR IN 2020 PROVINCIAL ELECTION			
		BC NDP (n=356)	BC Liberals (n=235)	greens OF BRITISH COLUMBIA (n=77)	Conservative British Columbia (n=64)
<b>BC NDP</b>	44%	86%	9%	15%	12%
<b>BC Liberals</b>	28%	5%	81%	7%	2%
<b>greens</b> OF BRITISH COLUMBIA	12%	7%	2%	74%	2%
<b>Conservative</b> British Columbia	12%	2%	7%	4%	83%
Other	4%	0%	1%	1%	1%

Base: All respondents who selected a party (n=831). From the July 22<sup>nd</sup> to 24<sup>th</sup> OMNI. Other not shown in columns because of lack of significant data.

Q2. If the B.C. PROVINCIAL election were held tomorrow, which party would you vote for?

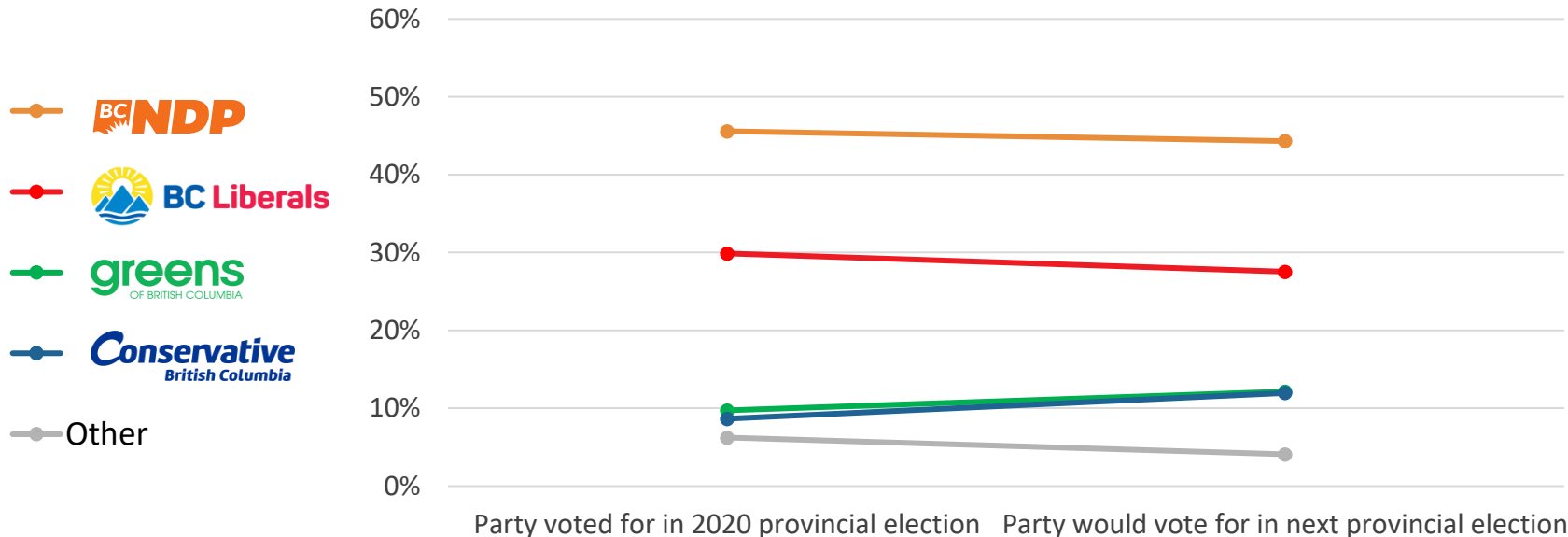
Q3. If you have not yet made up your mind, which of the following parties would you lean towards voting for, if the B.C. PROVINCIAL election were to be held tomorrow?





# PARTY WOULD VOTE FOR IN NEXT PROVINCIAL ELECTION

NDP support has eroded very little since the last election, and has held up better than the Liberals. Green and Conservative voter support has increased, but that is not unusual during pre-election timeframes.



Base: All respondents who selected a party (n=831). From the July 22<sup>nd</sup> to 24<sup>th</sup> OMNI.

Q2. If the B.C. PROVINCIAL election were held tomorrow, which party would you vote for?

Q3. If you have not yet made up your mind, which of the following parties would you lean towards voting for, if the B.C. PROVINCIAL election were to be held tomorrow?

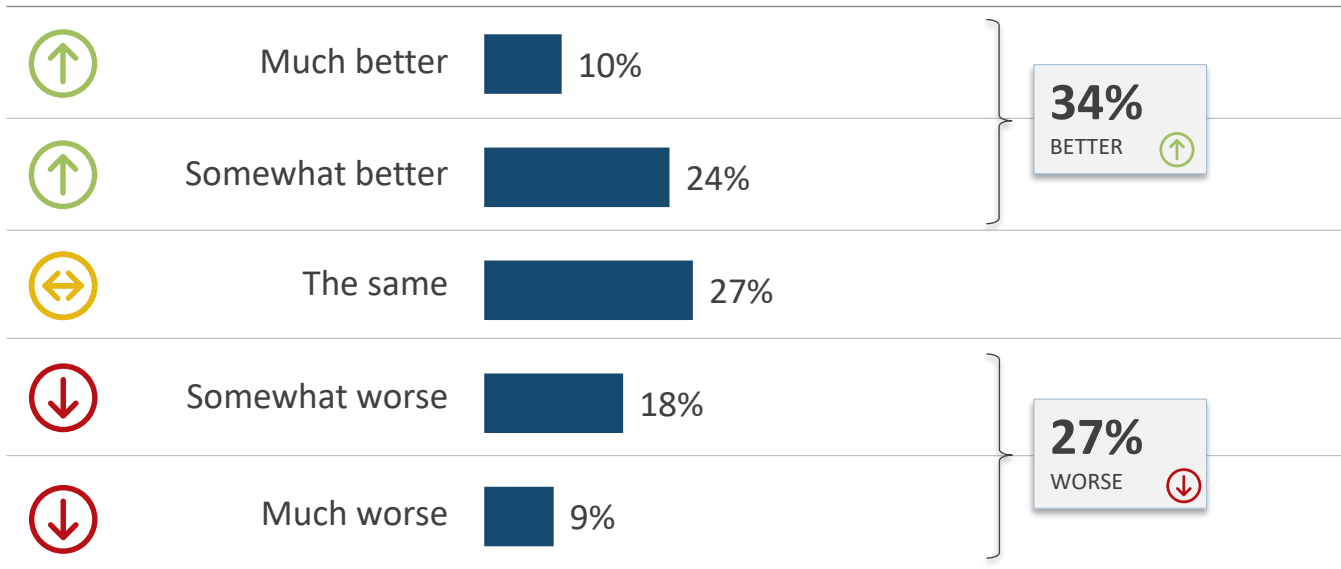


JOHN HORGAN



# HOW BC IS DOING NOW COMPARED TO BEFORE JOHN HORGAN BECAME PREMIER

The fact that more British Columbians think BC is in a better place than when Horgan took power in 2017, than those who think we are worse off is testament to his unwavering popularity.



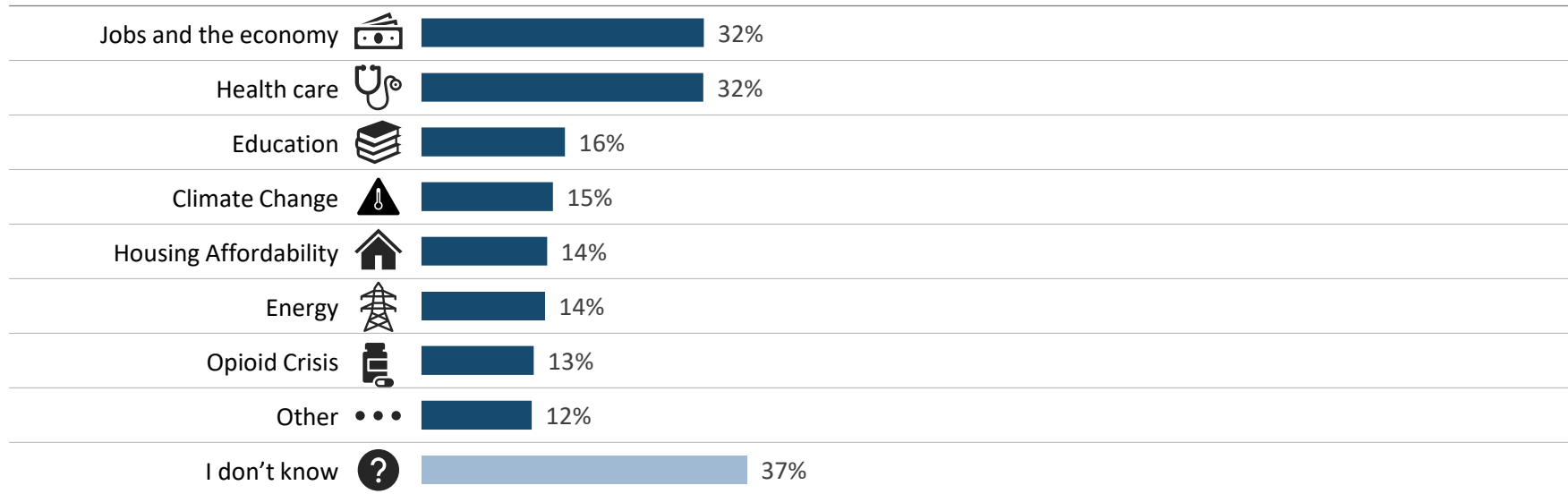
Base: All respondents (n=1,000). From the July 8<sup>th</sup> to 10<sup>th</sup> OMNI. DK not shown.

Q4. How do you feel B.C. is doing now compared to before John Horgan became the Premier of B.C. in 2017?



## AREAS OF IMPACT OF HORGAN IN B.C.

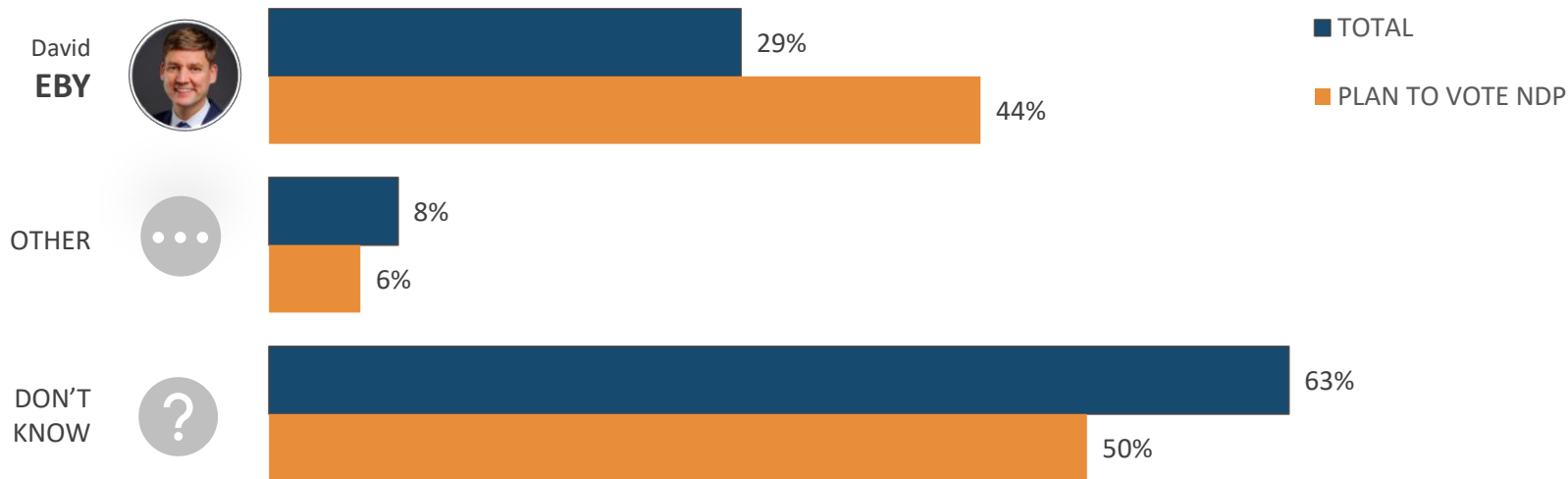
The two key areas British Columbians believe John Horgan made the most impact in are jobs and the economy, as well as healthcare.





# SUPPORT TOWARDS HORGAN'S POTENTIAL SUCCESSORS

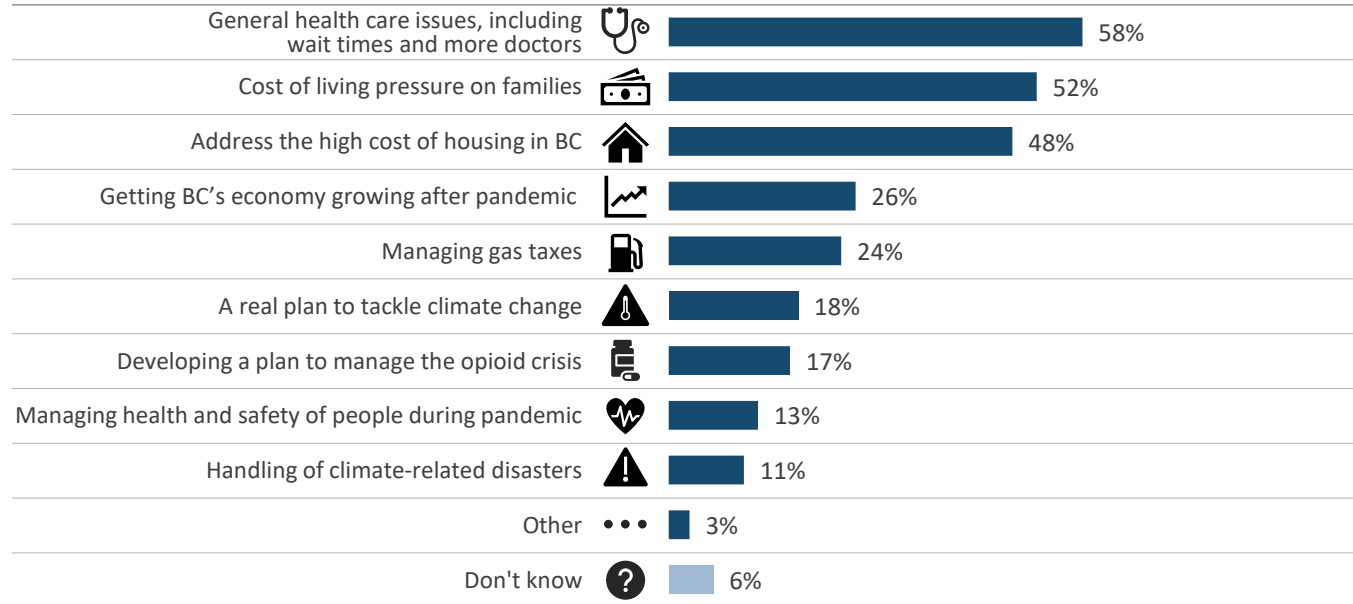
Almost two thirds of British Columbians don't know who they would support as successor. Among those who decided or are leaning towards voting for the NDP, support for David Eby is strongest (44%).





# ISSUES TO TACKLE IN THE FUTURE

The three most important issues that British Columbians want the next Premier to focus on are health care, cost of living, and cost of housing. These priorities have shifted since the 2020 election - away from pandemic related-issues.



Base: All respondents (n=1,000). From the July 8<sup>th</sup> to 10<sup>th</sup> OMNI.  
 Q7. Below is a list of issues the new Premier of B.C. could potentially make priorities.  
 Please indicate which 3 issues you believe it is most important for the new Premier of BC to focus on.

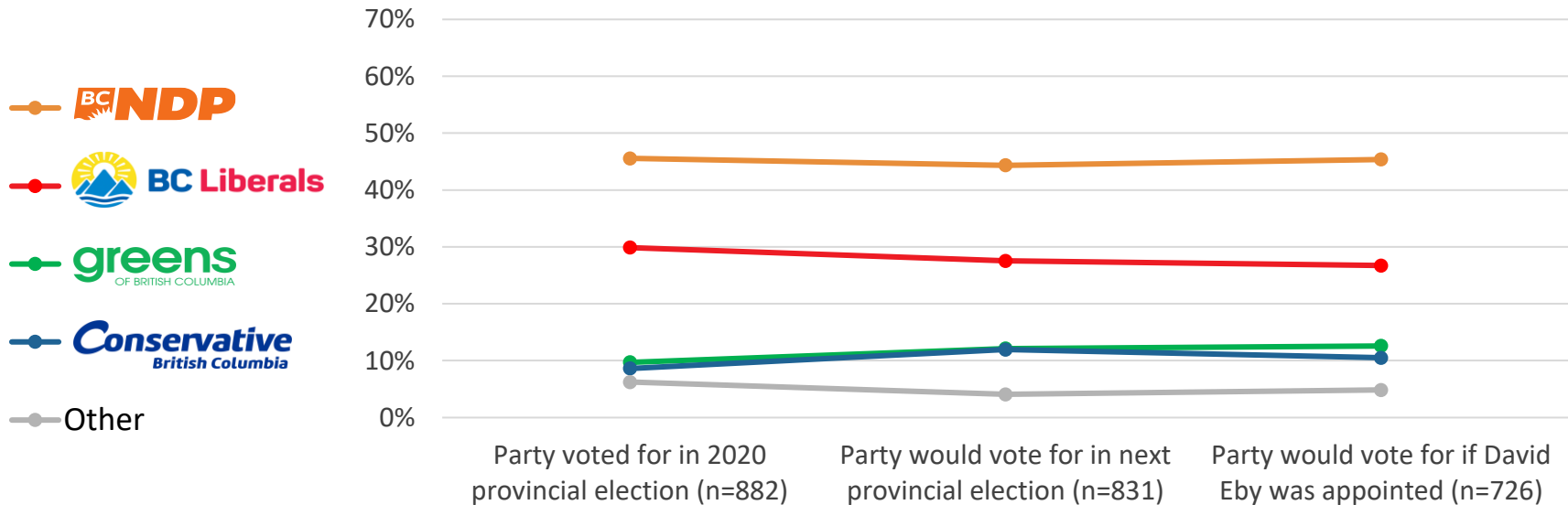
## 2020 list of priorities: (October 1<sup>st</sup> wave)

1. BC's economy growth after the pandemic
2. Health and safety during the pandemic
3. Cost of living pressure on families
4. Address the high cost of housing in BC
5. General health care issues, including wait times and more doctors
6. Climate change
7. Opioid crisis



# BC NDP SUPPORT WITH DAVID EBY AS LEADER

The NDP maintains its strong voter support with David Eby as Leader.



Base: All respondents who selected a party. From the July 22<sup>nd</sup> to 24<sup>th</sup> OMNI.

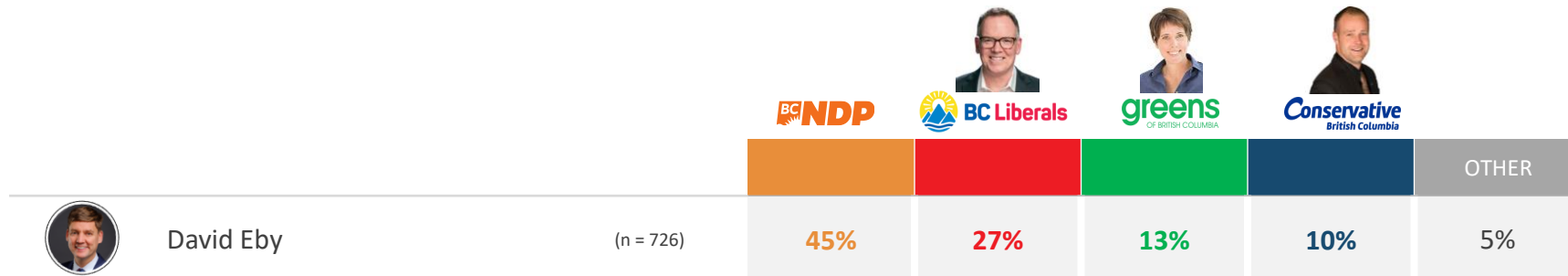
Q8. Consider the case in which [answer to Q6] was appointed as leader of BC's NDP and Premier of B.C. Which party would you vote for, if the B.C. PROVINCIAL election were to be held tomorrow?

Q9. Consider again the case in which [answer to Q6] was appointed as leader of BC's NDP and Premier of B.C. If you have not yet made up your mind, which of the following parties would you lean towards voting for, if the B.C. PROVINCIAL election were to be held tomorrow?



# PARTY WOULD VOTE FOR IN NEXT PROVINCIAL ELECTION WITH DAVID EBY

With David Eby the NDP maintains majority of support.



Base: All respondents who selected a party. From the July 22<sup>nd</sup> to 24<sup>th</sup> OMNI.

Q8. Consider the case in which [answer to Q6] was appointed as leader of BC's NDP and Premier of B.C. Which party would you vote for, if the B.C. PROVINCIAL election were to be held tomorrow?

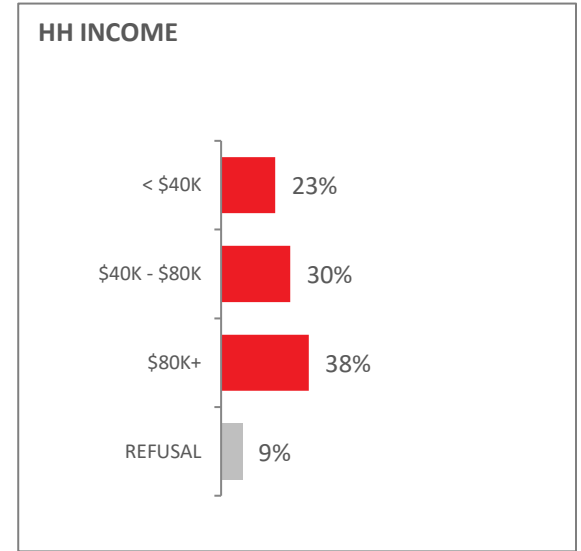
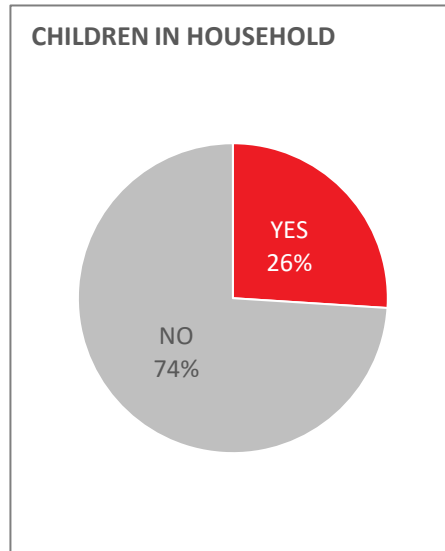
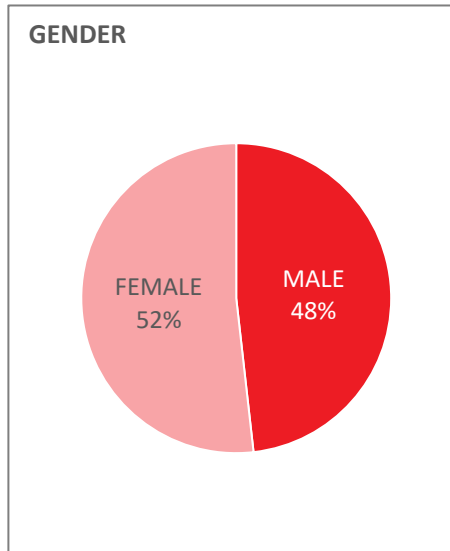
Q9. Consider again the case in which [answer to Q6] was appointed as leader of BC's NDP and Premier of B.C. If you have not yet made up your mind, which of the following parties would you lean towards voting for, if the B.C. PROVINCIAL election were to be held tomorrow?



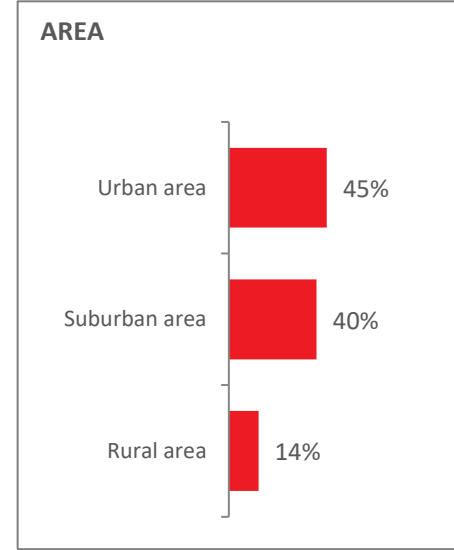
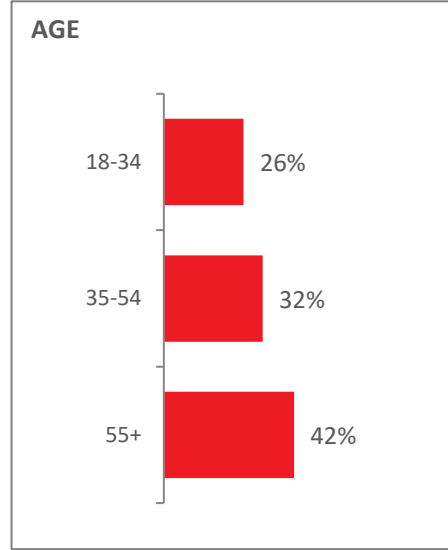
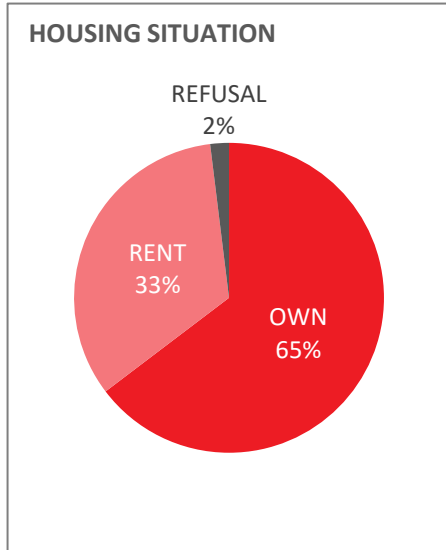
RESPONDENT PROFILE



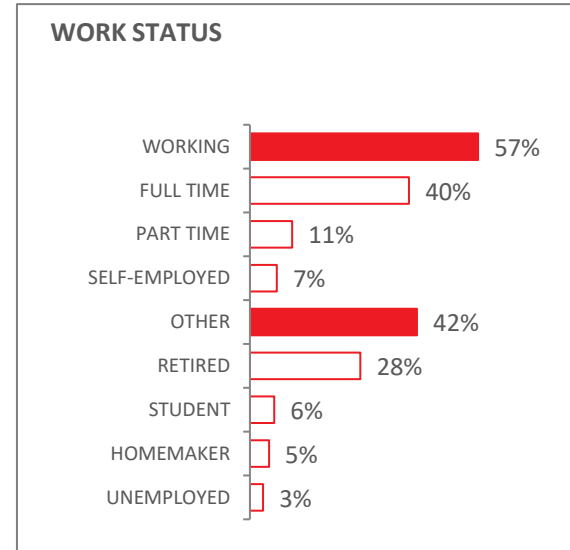
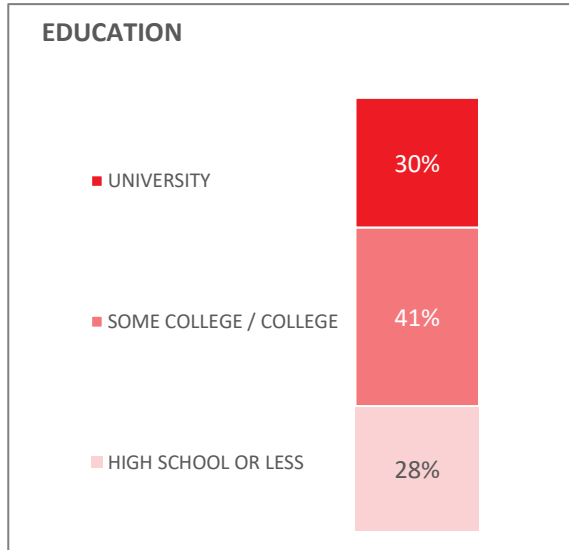
# Respondent Profile

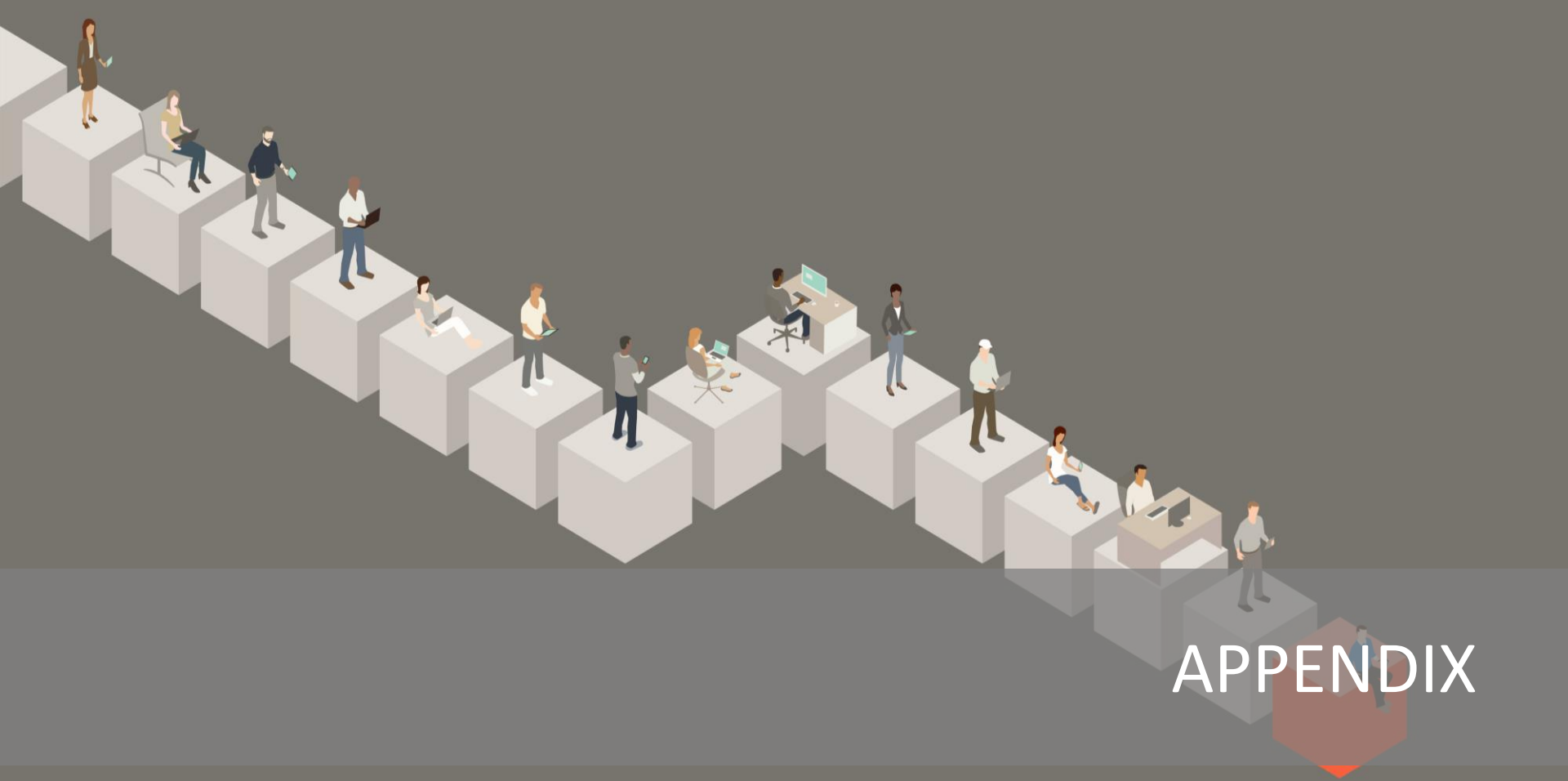


# Respondent Profile



# Respondent Profile



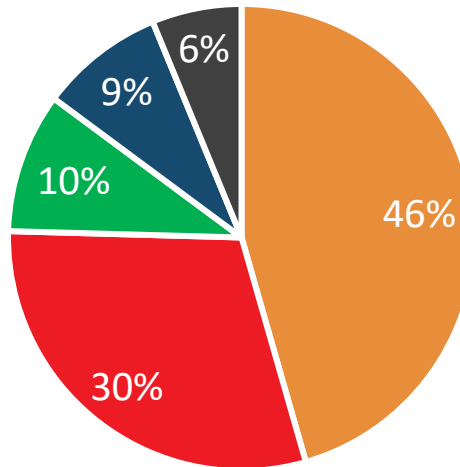


# APPENDIX



## PARTY VOTED FOR IN THE 2020 PROVINCIAL ELECTION

Consistent with election results, it seems the largest share of voters chose the B.C. NDP party in the last provincial election



## OUR SERVICES

- **Leger**  
Marketing research and polling
- **Leger MetriCX**  
Strategic and operational customer experience consulting services
- **Leger Analytics (LEA)**  
Data modelling and analysis
- **Leger Opinion (LEO)**  
Panel management
- **Leger Communities**  
Online community management
- **Leger Digital**  
Digital strategy and user experience
- **International Research**  
Worldwide Independent Network (WIN)

**600**  
EMPLOYEES



**185**  
CONSULTANTS



**8**  
OFFICES

MONTREAL | QUEBEC CITY | TORONTO | WINNIPEG  
EDMONTON | CALGARY | VANCOUVER | PHILADELPHIA

# OUR CREDENTIALS



Leger is a member of the [Canadian Research Insights Council \(CRIC\)](#), the industry association for the market/survey/insights research industry.



Leger is a member of [ESOMAR](#) (European Society for Opinion and Market Research), the global association of opinion polls and marketing research professionals. As such, Leger is committed to applying the [international ICC/ESOMAR](#) code of Market, Opinion and Social Research and Data Analytics.



Leger is also a member of the [Insights Association](#), the American Association of Marketing Research Analytics.



Leger is a sponsor of [CAIP Canada](#), Canada's professional body for Certified Analytics and Insights Professionals who uphold CRIC's marketing research and public opinion research standards. CAIP Canada is globally endorsed by ESOMAR and the MRII/University of Georgia.

# Leger

*We know Canadians*

