

**Leger**

---

REPORT

# Immigration Plan

*Survey of Canadians*



THE  
**CANADIAN  
PRESS**

DATE 2023-11-28



# Methodology

---



## Method

Online survey among respondents 18 years of age or older.

(Canadian sample: n= 1,529).

Respondents had the option of completing the survey in English or in French and were randomly recruited using LEO's online panel.



## When

November 24 to  
November 26, 2023



## Margin of error

For comparison purposes, a probability sample of this size yields a margin of error no greater than  $\pm 2.51\%$ , (19 times out of 20) for the Canadian sample.



## Weighting

Results were weighted according to **age, gender, mother tongue, region, education and presence of children in the household** in order to ensure a representative sample of the Canadian population.

# Methodology

---



## Significant differences

Data in bold **red** characters indicate a significantly lower proportion than that of other respondents. Conversely, data in bold **green** characters indicate a significantly higher proportion than that of other respondents.



## Rounded data

The numbers presented have been rounded up. However, the numbers before rounding were used to calculate the sums presented and might therefore not correspond to the manual addition of these numbers.



## Questions

Have questions about the data presented in this report? Please contact Christian Bourque, Executive Vice-President, Eastern Canada at the following e-mail addresses: [cbourque@leger360.com](mailto:cbourque@leger360.com)

*A more detailed methodology is presented in the Appendix.*

# Methodology

Leger is the polling firm that has presented the most accurate election survey data, on average, over the last ten years in Canada. During the last federal election in 2021, Leger was once again **the most accurate firm in the country**. This accuracy is attributed to the quality of the LEO panel and rigorous application of methodological rules by Leger's 600 employees, including 200 professionals in Leger's eight offices across Canada (Montreal, Toronto, Quebec City, Winnipeg, Calgary, Edmonton and Vancouver) and in the United States (New York).

Poll aggregator 338Canada.com gave Leger the highest rating among all polling firms in Canada for the accuracy of its studies. See <https://338canada.com/pollster-ratings.htm>

## 2021 CANADIAN FEDERAL ELECTION



### LEGER SURVEY

Published in *Le Journal de Montréal*  
and *The National Post/Postmedia*  
September 18, 2021

### OFFICIAL RESULTS

2021 Canadian Federal Election\*

|       |       |       |      |      |      |
|-------|-------|-------|------|------|------|
| 33%   | 32%   | 19%   | 7%   | 6%   | 2%   |
| 33.7% | 32.6% | 17.8% | 7.7% | 5.0% | 2.3% |

# Key Highlights

*Recently, there has been a lot of public discussion regarding the number of immigrants admitted each year in Canada and their impact on public services. From November 24 to 26, 2023, we surveyed Canadians to find out about their opinions and concerns regarding the immigration in Canada.*

## Some of the key highlights of our survey about immigration in Canada include...

- Since March 2022, the number of Canadians who would like to welcome more immigrants has dropped from 17% to 9%. 43% of Canadians would like to welcome the same amount, and 39% would like to welcome fewer. Conservative voters are significantly more likely to want fewer immigrants welcomed in Canada.
- Over half of Canadians (53%) believe that the federal government's plan will admit too many immigrants to the country. This proportion is higher among Conservative voters (70%) and Canadians aged 55 and over (60%).
- Although 72% of Canadians agree that immigrants play a key role in growing Canada's population, virtually the same proportion believe that immigrants are contributing to the housing crisis (75%) and putting pressure on the health care system (73%) and the school system (63%).



---

REPORT

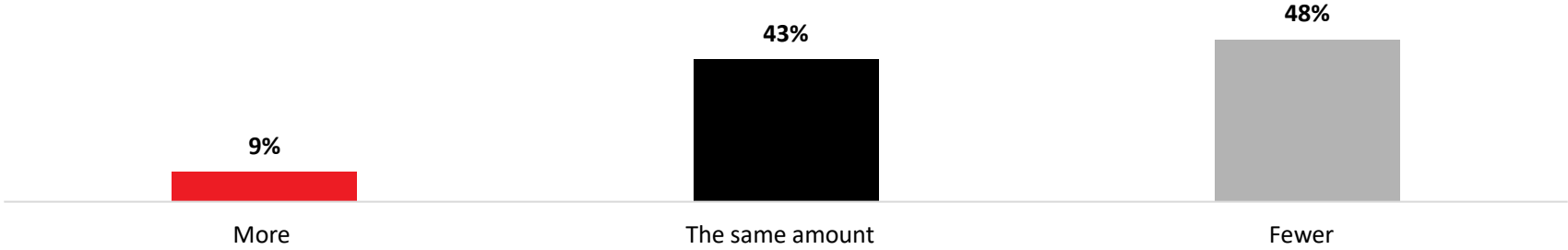
# Detailed Results



# Number of Immigrants Coming to Canada

**Q1.** Would you like Canada to accept more, the same amount, or fewer immigrants than in the past?

Base: All respondents (n=1,529)

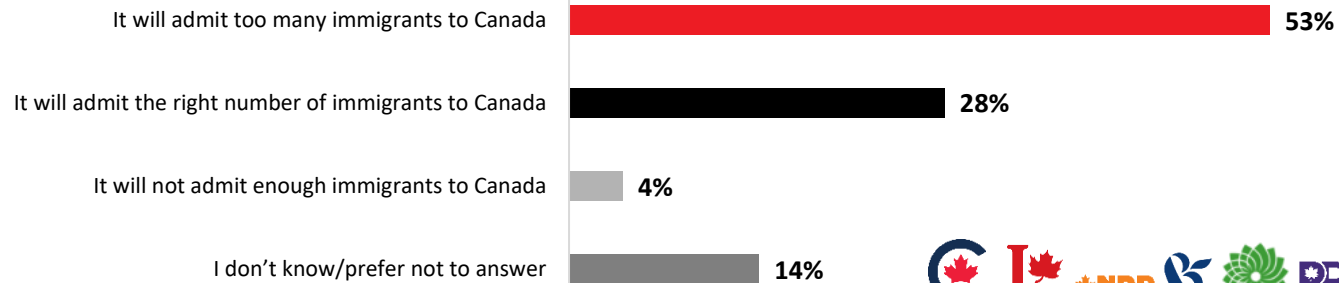


|                 | Total Canada | ATL | QC  | ON  | MB/SK | AB  | BC  | 18-34 | 35-54 | 55+ | Male | Female | CPC | LPC | NDP | BQ  | GPC | PPC | Total March 2022 | Gap |
|-----------------|--------------|-----|-----|-----|-------|-----|-----|-------|-------|-----|------|--------|-----|-----|-----|-----|-----|-----|------------------|-----|
| Weighted n=     | 1,529        | 102 | 353 | 592 | 98    | 170 | 212 | 407   | 492   | 630 | 745  | 784    | 482 | 317 | 248 | 89  | 35  | 29  | 1,527            |     |
| Unweighted n=   | 1,529        | 100 | 418 | 601 | 130   | 127 | 153 | 397   | 540   | 592 | 774  | 755    | 475 | 327 | 227 | 104 | 40  | 30  | 1,527            |     |
| More            | 9%           | 6%  | 11% | 8%  | 6%    | 8%  | 12% | 14%   | 9%    | 6%  | 11%  | 7%     | 5%  | 11% | 15% | 6%  | 15% | 7%  | 17%              | -8  |
| The same amount | 43%          | 41% | 45% | 41% | 43%   | 38% | 48% | 50%   | 39%   | 41% | 45%  | 41%    | 31% | 61% | 48% | 41% | 42% | 29% | 45%              | +2  |
| Fewer           | 48%          | 53% | 45% | 51% | 51%   | 53% | 41% | 36%   | 52%   | 54% | 45%  | 52%    | 64% | 29% | 37% | 52% | 43% | 64% | 39%              | +9  |

# Opinion on the Federal Government's Immigration Plan

**Q2.** The Government of Canada's current immigration plan is to welcome 465,000 immigrants to Canada this year, 485,000 in 2024 and 500,000 in 2025. In 2022, Canada admitted over 437,000 immigrants. Which of the following best reflects your opinion about the government's plan?

Base: All respondents (n=1,529)



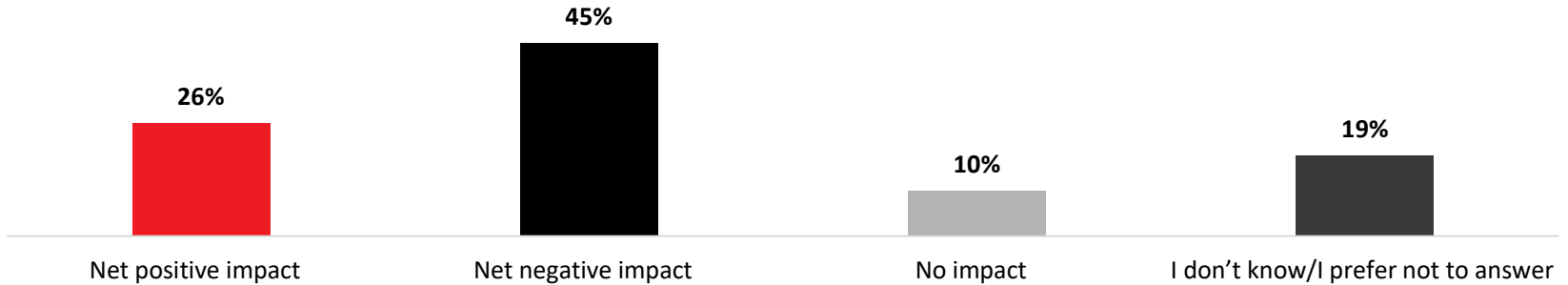
|  | Total Canada | ATL | QC  | ON  | MB/SK     | AB  | BC         | 18-34      | 35-54      | 55+        | Male       | Female     | CPC        | LPC        | NDP        | BQ  | GPC | PPC | Total Nov. 2022 | Gap |
|--|--------------|-----|-----|-----|-----------|-----|------------|------------|------------|------------|------------|------------|------------|------------|------------|-----|-----|-----|-----------------|-----|
| <b>Weighted n=</b>                                     | 1,529        | 102 | 353 | 592 | 98        | 170 | 212        | 407        | 492        | 630        | 745        | 784        | 482        | 317        | 248        | 89  | 35  | 29  | 1,537           |     |
| <b>Unweighted n=</b>                                   | 1,529        | 100 | 418 | 601 | 130       | 127 | 153        | 397        | 540        | 592        | 774        | 755        | 475        | 327        | 227        | 104 | 40  | 30  | 1,537           |     |
| It will admit too many immigrants to Canada            | <b>53%</b>   | 58% | 55% | 52% | 51%       | 61% | <b>44%</b> | <b>45%</b> | 51%        | <b>60%</b> | 53%        | 53%        | <b>70%</b> | <b>38%</b> | <b>41%</b> | 63% | 58% | 62% | <b>49%</b>      | +4  |
| It will admit the right number of immigrants to Canada | <b>28%</b>   | 22% | 27% | 28% | 30%       | 24% | <b>39%</b> | <b>35%</b> | <b>25%</b> | 27%        | <b>32%</b> | <b>25%</b> | <b>20%</b> | <b>48%</b> | <b>37%</b> | 25% | 25% | 19% | <b>31%</b>      | -3  |
| It will not admit enough immigrants to Canada          | <b>4%</b>    | 5%  | 4%  | 5%  | <b>1%</b> | 4%  | 4%         | 4%         | <b>7%</b>  | <b>2%</b>  | <b>5%</b>  | <b>3%</b>  | 3%         | 3%         | 7%         | 4%  | 5%  | 6%  | <b>5%</b>       | -1  |
| I don't know/Prefer not to answer                      | <b>14%</b>   | 15% | 14% | 15% | 17%       | 12% | 13%        | 16%        | <b>17%</b> | <b>11%</b> | <b>10%</b> | <b>18%</b> | <b>6%</b>  | 12%        | 16%        | 9%  | 13% | 12% | <b>16%</b>      | -2  |



# Number of Immigrants Coming to Canada

**Q3.** How do you feel the current levels of immigration impact the country's economy?

Base: All respondents (n=1,529)



|                                   | Total Canada | ATL | QC         | ON  | MB/SK | AB        | BC  | 18-34      | 35-54 | 55+ | Male       | Female     | CPC        | LPC        | NDP        | BQ  | GPC | PPC |
|-----------------------------------|--------------|-----|------------|-----|-------|-----------|-----|------------|-------|-----|------------|------------|------------|------------|------------|-----|-----|-----|
| Weighted n=                       | 1,529        | 102 | 353        | 592 | 98    | 170       | 212 | 407        | 492   | 630 | 745        | 784        | 482        | 317        | 248        | 89  | 35  | 29  |
| Unweighted n=                     | 1,529        | 100 | 418        | 601 | 130   | 127       | 153 | 397        | 540   | 592 | 774        | 755        | 475        | 327        | 227        | 104 | 40  | 30  |
| Net positive impact               | <b>26%</b>   | 25% | 26%        | 24% | 28%   | 24%       | 33% | 25%        | 24%   | 28% | <b>29%</b> | <b>23%</b> | <b>19%</b> | <b>41%</b> | <b>34%</b> | 26% | 40% | 13% |
| Net negative impact               | <b>45%</b>   | 48% | <b>40%</b> | 47% | 44%   | 54%       | 38% | 44%        | 45%   | 45% | 45%        | 44%        | <b>62%</b> | <b>25%</b> | <b>36%</b> | 47% | 43% | 68% |
| No impact                         | <b>10%</b>   | 10% | 8%         | 10% | 8%    | 13%       | 15% | <b>15%</b> | 9%    | 9%  | 11%        | 10%        | <b>7%</b>  | <b>16%</b> | 14%        | 6%  | 8%  | 5%  |
| I don't know/Prefer not to answer | <b>19%</b>   | 17% | <b>26%</b> | 19% | 19%   | <b>9%</b> | 14% | 16%        | 21%   | 18% | <b>15%</b> | <b>23%</b> | <b>12%</b> | 17%        | 16%        | 21% | 9%  | 13% |

# Level of Agreement with the Impact of Immigration (1/2)

**Q4.** Please indicate the extent to which you agree or disagree with the following?

Base: All respondents (n=1,529)



# Level of Agreement with the Impact of Immigration (2/2)

**Q4.** Please indicate the extent to which you agree or disagree with the following?

Base: All respondents

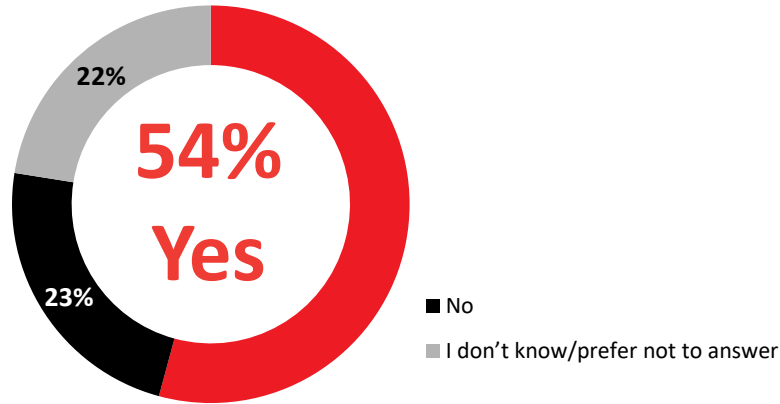


| % Total Agree Presented  | Total Canada | ATL | QC         | ON         | MB/SK      | AB         | BC         | 18-34      | 35-54      | 55+        | Male       | Female     | CPC        | LPC        | NDP        | BQ         | GPC | PPC |
|--|--------------|-----|------------|------------|------------|------------|------------|------------|------------|------------|------------|------------|------------|------------|------------|------------|-----|-----|
| Weighted n=  | 1,529        | 102 | 353        | 592        | 98         | 170        | 212        | 407        | 492        | 630        | 745        | 784        | 482        | 317        | 248        | 89         | 35  | 29  |
| Unweighted n=  | 1,529        | 100 | 418        | 601        | 130        | 127        | 153        | 397        | 540        | 592        | 774        | 755        | 475        | 327        | 227        | 104        | 40  | 30  |
| Immigration significantly contributes to the cultural diversity of Canada  | <b>76%</b>   | 78% | 74%        | 78%        | 77%        | 70%        | 77%        | <b>70%</b> | <b>72%</b> | <b>83%</b> | <b>73%</b> | <b>79%</b> | <b>72%</b> | <b>87%</b> | <b>83%</b> | 79%        | 69% | 52% |
| The increase in immigrants is contributing to the housing crisis   | <b>75%</b>   | 77% | 78%        | 76%        | 71%        | 80%        | <b>66%</b> | <b>66%</b> | 76%        | <b>81%</b> | 73%        | 77%        | <b>84%</b> | <b>70%</b> | <b>65%</b> | <b>90%</b> | 79% | 87% |
| The increase in immigrants is putting pressure on our healthcare system  | <b>73%</b>   | 80% | 75%        | 71%        | 73%        | 77%        | 67%        | <b>60%</b> | 71%        | <b>83%</b> | 75%        | 71%        | <b>85%</b> | 69%        | <b>60%</b> | <b>84%</b> | 69% | 73% |
| Immigrants play a key role in growing Canada's population  | <b>72%</b>   | 66% | <b>77%</b> | 72%        | 70%        | <b>63%</b> | 77%        | <b>63%</b> | <b>68%</b> | <b>82%</b> | 71%        | 73%        | <b>66%</b> | <b>85%</b> | <b>81%</b> | <b>88%</b> | 65% | 55% |
| The increase in immigrants is putting pressure on our education system   | <b>63%</b>   | 65% | 67%        | <b>59%</b> | 62%        | 68%        | 63%        | <b>51%</b> | 63%        | <b>71%</b> | <b>67%</b> | <b>59%</b> | <b>78%</b> | 58%        | <b>46%</b> | <b>76%</b> | 57% | 73% |
| The arrival of younger immigrants contributes to the workforce and ultimately tax base, supporting older generations | <b>63%</b>   | 67% | 64%        | 63%        | 59%        | 60%        | 63%        | <b>58%</b> | 60%        | <b>68%</b> | <b>67%</b> | <b>59%</b> | 60%        | <b>76%</b> | <b>71%</b> | 63%        | 62% | 50% |
| The increase in immigrants is contributing to the affordability crisis   | <b>58%</b>   | 58% | <b>49%</b> | 62%        | 53%        | <b>69%</b> | 59%        | 54%        | 58%        | 61%        | 59%        | 58%        | <b>71%</b> | <b>50%</b> | <b>51%</b> | 66%        | 60% | 67% |
| Immigration is necessary to combat labour shortages  | <b>56%</b>   | 52% | <b>67%</b> | <b>51%</b> | <b>45%</b> | 51%        | 61%        | 52%        | <b>51%</b> | <b>62%</b> | 57%        | 54%        | <b>49%</b> | <b>77%</b> | 61%        | <b>70%</b> | 39% | 35% |

# Status of Ukrainian Immigrants

**Q5.** Do you believe that Ukrainians who came to Canada under the emergency visa program should be allowed to stay permanently in the country?

Base: All respondents (n=1,529)

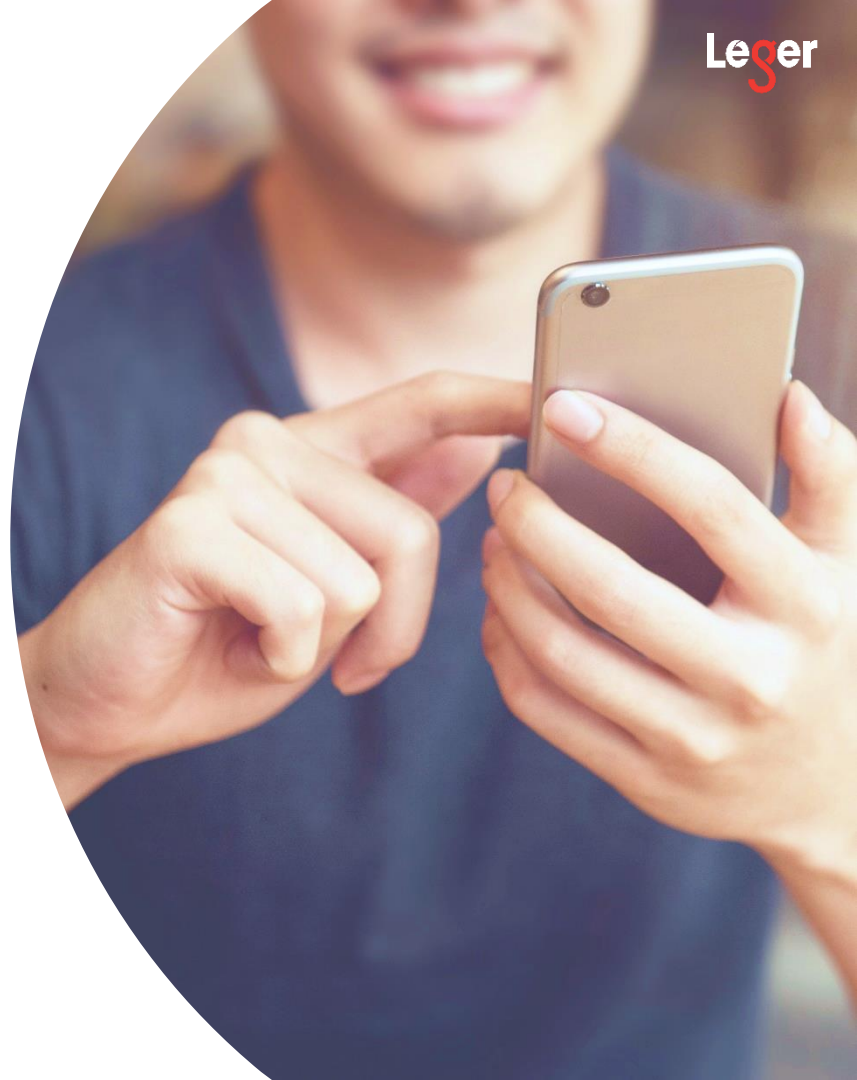


|                                       | Total Canada | ATL | QC         | ON         | MB/SK      | AB  | BC  | 18-34      | 35-54      | 55+        | Male       | Female     | CPC        | LPC        | NDP        | BQ         | GPC | PPC |
|---------------------------------------|--------------|-----|------------|------------|------------|-----|-----|------------|------------|------------|------------|------------|------------|------------|------------|------------|-----|-----|
| Weighted n=                           | 1,529        | 102 | 353        | 592        | 98         | 170 | 212 | 407        | 492        | 630        | 745        | 784        | 482        | 317        | 248        | 89         | 35  | 29  |
| Unweighted n=                         | 1,529        | 100 | 418        | 601        | 130        | 127 | 153 | 397        | 540        | 592        | 774        | 755        | 475        | 327        | 227        | 104        | 40  | 30  |
| Yes                                   | <b>54%</b>   | 59% | <b>62%</b> | <b>50%</b> | 63%        | 49% | 51% | 49%        | <b>47%</b> | <b>63%</b> | <b>58%</b> | <b>50%</b> | 52%        | <b>67%</b> | <b>65%</b> | <b>67%</b> | 40% | 32% |
| No                                    | <b>23%</b>   | 21% | <b>16%</b> | 26%        | 22%        | 29% | 24% | <b>30%</b> | 27%        | <b>17%</b> | 24%        | 23%        | <b>31%</b> | <b>17%</b> | <b>14%</b> | <b>13%</b> | 30% | 40% |
| I don't know / I prefer not to answer | <b>22%</b>   | 19% | 22%        | 24%        | <b>15%</b> | 22% | 26% | 21%        | <b>26%</b> | 21%        | <b>18%</b> | <b>27%</b> | <b>17%</b> | <b>16%</b> | 21%        | 21%        | 30% | 29% |

---

REPORT

# Detailed Methodology



# Weighted and Unweighted Sample (1/2)

The table below presents the Canadian geographic distribution of respondents before weighting.

|                       | Unweighted   | Weighted     |
|-----------------------|--------------|--------------|
| <b>Province</b>       | <b>1,529</b> | <b>1,529</b> |
| British Columbia      | 153          | 212          |
| Alberta               | 127          | 170          |
| Manitoba/Saskatchewan | 130          | 98           |
| Ontario               | 601          | 592          |
| Quebec                | 418          | 353          |
| Atlantic              | 100          | 102          |

# Weighted and Unweighted Sample (2/2)

The following tables present the demographic distribution of respondents according to gender, age and language (mother tongue) for Canada.

The table below presents the Canadian geographic distribution of respondents before weighting.

|                                 | Unweighted   | Weighted     |
|---------------------------------|--------------|--------------|
| <b>Gender</b>                   | <b>1,529</b> | <b>1,529</b> |
| Male                            | 774          | 745          |
| Female                          | 755          | 784          |
| <b>Age</b>                      | <b>1,529</b> | <b>1,529</b> |
| 18 to 34                        | 397          | 407          |
| 35 to 54                        | 540          | 492          |
| 55+                             | 592          | 630          |
| <b>Language (Mother tongue)</b> | <b>1,529</b> | <b>1,529</b> |
| English                         | 951          | 1,044        |
| French                          | 390          | 302          |
| Other                           | 186          | 181          |

# Our Services

---

- **Leger**  
Marketing research and polling
- **Customer Experience (CX)**  
Strategic and operational customer experience consulting services
- **Leger Analytics (LEA)**  
Data modelling and analysis
- **Leger Opinion (LEO)**  
Panel management
- **Leger Communities**  
Online community management
- **Leger Digital**  
Digital strategy and user experience
- **International Research**  
Worldwide Independent Network (WIN)

**600**

**EMPLOYEES**



**185**

**CONSULTANTS**



**8**

**OFFICES**

MONTREAL | QUEBEC CITY | TORONTO | WINNIPEG  
EDMONTON | CALGARY | VANCOUVER | NEW YORK



# Our Commitments to Quality

---



Leger is a member of the [Canadian Research Insights Council \(CRIC\)](#), the industry association for the market/survey/insights research industry.



Leger is a member of [ESOMAR](#) (European Society for Opinion and Market Research), the global association of opinion polls and marketing research professionals. As such, Leger is committed to applying the [international ICC/ESOMAR](#) code of Market, Opinion and Social Research and Data Analytics.



Leger is also a member of the [Insights Association](#), the American Association of Marketing Research Analytics.



Leger is a sponsor of [CAIP Canada](#), Canada's professional body for Certified Analytics and Insights Professionals who uphold CRIC's marketing research and public opinion research standards. CAIP Canada is globally endorsed by ESOMAR and the MRII/University of Georgia.